



City of  
Gothenburg

## Urban – Rural Gothenburg - New Urbanization for Sustainability Driven Local Economic Development

*A Swedish-German collaboration for centuries*



Region Hannover



EUROPEISKA  
UNIONEN  
Europeiska  
regionala  
utvecklingsfonden

# A top European Growth Region 2000 - 2016



Göteborgs  
Stad

**44,000**

NEW  
ESTABLISHMENTS

**170,000**

NEW INHABITANTS

**117,000**

MORE JOBS

**44%**

INCREASE IN PRODUCTIVITY

**25%** of Sweden's total R&D investments take place in the Gothenburg region

The whole city socially sustainable



Differences are  
**7.5 years**

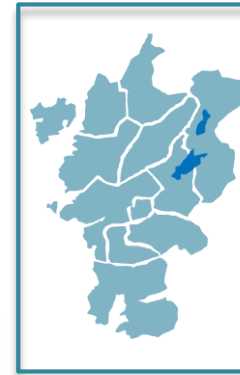


Differences are  
**9.1 years**

**Equal Gothenburg - a real opportunity for economic development and human dignity**

Gothenburg region

13 municipalities



**192 SEK BILLION**  
GOODS EXPORTS  
2016

Population  
1 milj.

Labour  
market

1,2 milj.

Population  
2030

1,7 milj.

**16 %**  
SHARE OF SWEDEN  
2016

**6 %**  
REAL GROWTH 2015-  
2016



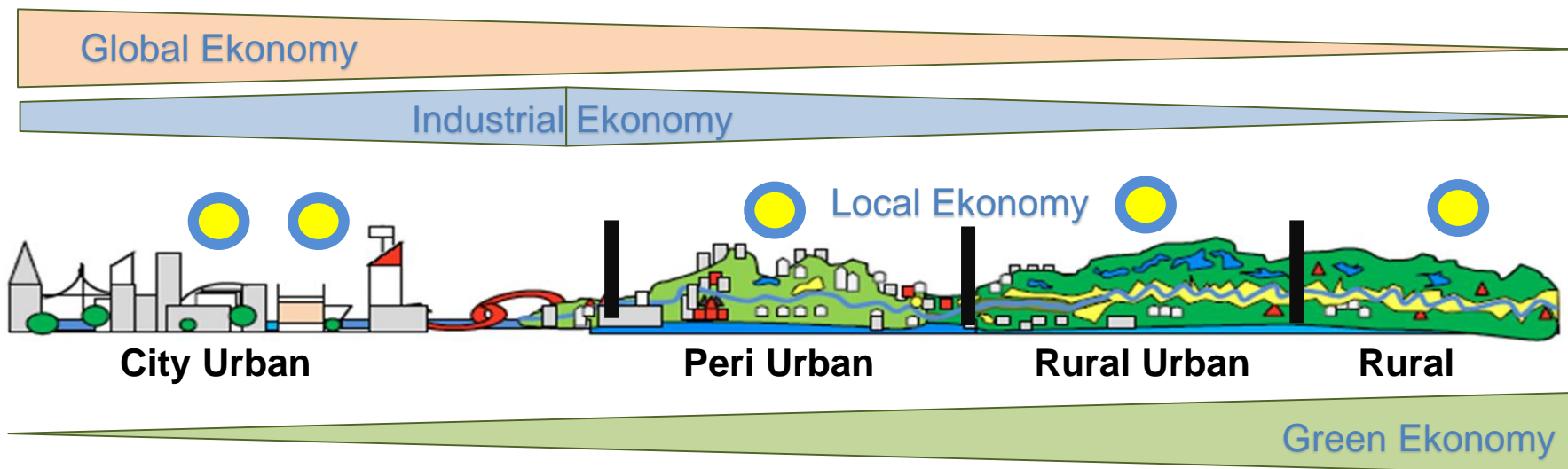
EUROPEISKA  
UNIONEN  
Europeiska  
regionala  
utvecklingsfonden

# Breaking the walls



City of  
Gothenburg

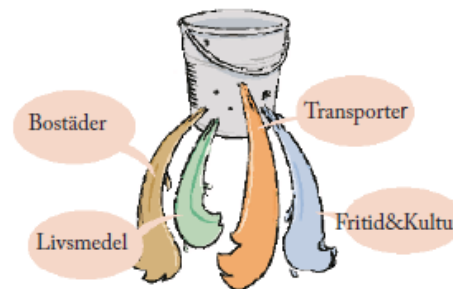
The sustainable possibilities for local economic development and democracy  
balanced in and with a globalized world



## Local economic analysis

Knowledge, consumption, business, economic flows, transport, energy, natural resources, waste, need for new credit guarantees etc.

## Action Plans for Local Economic Development



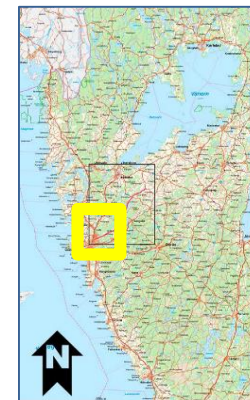
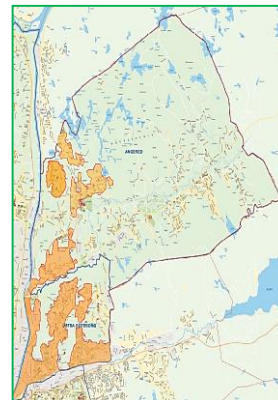
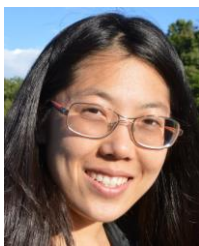
EUROPEISKA  
UNIONEN  
Europeiska  
regionala  
utvecklingsfonden



# Model areas for sustainable urban-rural development for local co-economic development in Gothenburg region



City of  
Gothenburg



**PERI URBANISATION  
IN EUROPE  
URBANCHANGE.EU**



EUROPEISKA  
UNIONEN  
Europeiska  
regionala  
utvecklingsfonden



Göteborgs  
Stad

## **BUSINESS REGION GÖTEBORG**

### **Development North East**

## **URBAN RURAL GOTHENBURG**

**DAN MELANDER**  
**Project manager**

**[dan.melander@businessregion.se](mailto:dan.melander@businessregion.se)**

**Tel: +46 (0) 31-367 61 72**

**SMS: +46 (0) 70-967 56 00**



EUROPEISKA  
UNIONEN  
Europeiska  
regionala  
utvecklingsfonden